

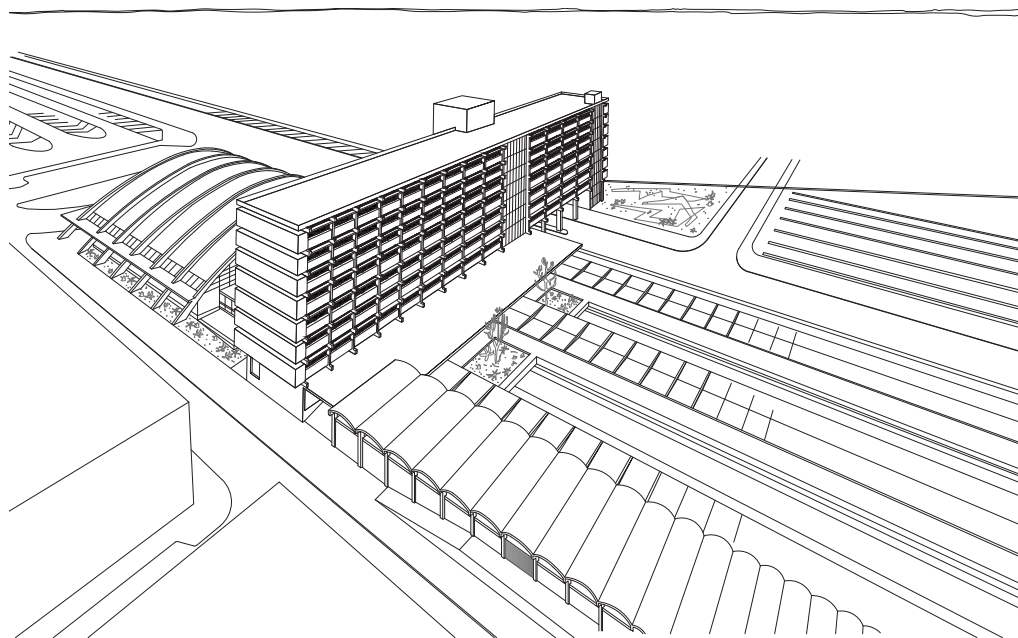
KEEPING IT MODERN

31 JUL – 16 OCT 23

# Beira Central Station

Mozambique (1957-1966)

João Garizo do Carmo  
Francisco José de Castro  
Paulo de Melo Sampaio





## Keeping It Modern: Beira Central Station, Mozambique (1957-1966)

Upon termination of the concession of the territories of Manica and Sofala to Company of Mozambique (1892-1942), and after their transfer to the direct administration of the Portuguese State the Port of Beira was purchased on January 1, 1949, with funds from a Central Government loan to the former province of Mozambique. The Beira Railway line was purchased directly by the Ministry of Finance of the Metropolitan Government on April 1 of the same year. Both infrastructures were assigned to the administration of the Ports, Railways and Transport Services of Mozambique, which began exercising it on the following October 1.

The administration then undertook a vast program to improve the infrastructure received. In addition to the works to increase the capacity of the port, it was necessary to renew the entire superstructure of the railway line, to reacquire all the rolling stock and traction equipment, to replace or rebuild all the buildings, to build a goods station, and to construct a new terminus station and headquarter for the port and the railway administration in the city of Beira.

The triple authorship of the Beira Central Station, a building designed by João Garizo do Carmo (1917-1974), Francisco José de Castro (1923-2016) and Paulo de Melo Sampaio (1926-1968), contributed to informing the complex with the personal references of its authors, architects committed to using the international Modern Movement's lexicon and principles.

The construction of a complex with the scale of the Central Station – at the time the largest railway station in the country and currently a landmark of the city of Beira – was a statement of the economic importance of the city and the Ports, Railways and Transport Services of Mozambique, both at the district and provincial level, and also at the national and continental level

As the materialization of the development agenda of the Portuguese government the Beira Central Station represented the meeting of two opposing utopias in a common enterprise: the internationalists principles, methods, and languages of the Modern Movement architecture with the nationalist colonial policy of the *Estado Novo* regime.



The exhibition *Keeping It Modern: Beira Central Station, Mozambique (1957-1966)*, is a sample of the conservation management project for that railway complex. Proposed in 2019 by a team of teachers, researchers and technicians from the University of Minho, in Guimarães, from the Faculty of Architecture and Physical Planning of the Eduardo Mondlane University, in Maputo, and from the Mozambique Railways, in the city of Beira, this project was funded by the program Keeping It Modern, an initiative of the Getty Foundation, from Los Angeles, USA.

Taking advantage of the fact that it is now being presented at the Calouste Gulbenkian Foundation, the exhibition also includes some original documents that show the support granted by this philanthropic institution, in the 1960s, to the construction of three landmark buildings in the city of Beira, good examples of a local expression of the Modernist architecture: the Calouste Gulbenkian Municipal Library, the Beira Auditorium-Art Gallery and the African Centre of Manica and Sofala.

These cases are also good examples of the countless support granted by the Foundation throughout its history to the construction, refurbishment, restoration and equipping of buildings and spaces in Portugal, Africa, and the Middle East, architecturally enabling various public and community facilities, such as: hospitals, youth residences, elementary school, kindergartens, religious missions, libraries, museums, galleries, auditoriums, etc.

# MODERN ARCHITECTURE

## MOZAMBIQUE

### PEMBA

- 1 BANCO NACIONAL ULTRAMARINO BRANCH / BANK OF MOZAMBIQUE (1953 - 1957), Manuel Alzina de Meneses, (EM, 2010)
- 2 AIRPORT AIR TERMINAL (1959 - c. 1963), João José Tinoco and Maria Carlota Quintanilha, (EM, 2010)
- 3 ADMINISTRATIVE OFFICES / CABO DELGADO GOVERNMENT (c. 1963 - 1966), João José Tinoco and Maria Carlota Quintanilha, (EM, 2010)
- 4 PEMBA CINEMA (1963 - a. 1970), Paulo de Melo Sampaio, (EM, 2010)
- 5 JERÓNIMO ROMERO TECHNICAL COMMERCIAL SCHOOL / PEMBA INDUSTRIAL AND COMMERCIAL SCHOOL (1962-1968), João José Tinoco and Public Works Service, (EM, 2010)
- 6 SONAP GAS STATION (a. 1955), Nuno Craveiro Lopes, (EM, 2010)
- 7 EPISCOPAL PALACE (1959 - b. 1962), João Garizo do Carmo, (EM, 2010)

### LICHINGA

- 1 AIRPORT AIR TERMINAL (1961 - 1964), João José Tinoco, (EM, 2009)
- 2 PLANALTO / ABC CINEMA AND PINTO & SOTTO MAYOR BANK / BARCLAYS BANK (a. 1968), Bernardino Ramalhete and Eduardo da Naia Marques, (EM, 2009)
- 3 ADMINISTRATIVE OFFICES / NIASSA GOVERNMENT (1959 - 1962), João José Tinoco and Maria Carlota Quintanilha, (EM, 2009)

### NAMPULA

- 1 COMPANHIA DE SEGUROS NAUTICUS BUILDING (1955 - 1960), Pancho Guedes, (EM, 2009)
- 2 ALMIRANTE GAGO COUTINHO HIGH SCHOOL/ NAMPULA SECONDARY SCHOOL (1969 - a. 1970), Rute Bota at the Public Works Service, (EM, 2009)

- 3 MOZAMBIQUE CINEMA (a. 1969), Bernardino Ramalhete, Eduardo da Naia Marques and José Pacheco, (EM, 2009)
- 4 AIRPORT AIR TERMINAL (1969 - a. 1973), José Joaquim Dias, (EM, 2009)
- 5 EGAS MONIZ HOSPITAL / NAMPULA CENTRAL HOSPITAL (c. 1958 - 1968), Francisco Assis and Luís Vasconcelos at the Public Works Service, (EM, 2010)
- 6 ALMEIDA GARRETT CINE-THEATER (1955 - 1956), João Garizo do Carmo, (EM, 2009)

#### SONGO

- 1 LUSITÂNIA AIRPORT AIR TERMINAL / SONGO AIRFIELD (1971 - 1972), Octávio Rego Costa, (EM, 2018)
- 2 BANCO NACIONAL ULTRAMARINO BRANCH / MILLENNIUM BIM (1972 - a. 1973), Carlos da Veiga Camelo, (EM, 2018)

#### TETE

- 1 AIRPORT AIR TERMINAL / CHINGODZI INTERNATIONAL AIRPORT (1973 - c. 1981), João José Tinoco and António Matos Veloso, (EM, 2018)
- 2 GIRLS ELEMENTARY SCHOOL / COMPLETE JOSINA MACHEL ELEMENTARY SCHOOL (1955 - 1960), Fernando Mesquita at the Public Works Service, (EM, 2018)
- 3 LACERDA E ALMEIDA TECHNICAL ELEMENTARY SCHOOL / TETE SECONDARY SCHOOL (1964 - a. 1965), Public Works Service, (EM, 2018)
- 4 ADMINISTRATIVE OFFICES / TETE GOVERNMENT (c. 1970), Alberto Firmino Trabulo, (EM, 2018)
- 5 TREASURY AND WAREHOUSE MANAGEMENT (1958 - 1960), Public Works Service, (EM, 2018)
- 6 PARISH RESIDENCE / SOCIAL CENTER / EPISCOPAL PALACE AND TETE CATHEDRAL (1964 - 1965), Julião de Azevedo and João José Malato, (EM, 2018)
- 7 333 CINEMA (a. 1968), Bernardino Ramalhete, (EM, 2018)

- 8 BANCO NACIONAL ULTRAMARINO BRANCH/ MOZAMBIQUE BANK (1971 - a. 1974), Carlos da Veiga Camelo and Octávio Rego Costa, (EM, 2018)

#### QUELIMANE

- 1 MONTEGIRO COMMERCIAL, TOURIST AND HOUSING COMPLEX (1954 - 1966), Arménio Losa and Cassiano Barbosa, (EM, 2009)
- 2 D. FRANCISCO BARRETO INDUSTRIAL AND COMMERCIAL SCHOOL / MAY 1ST INDUSTRIAL AND COMMERCIAL SCHOOL (1960 - 1963), Fernando Mesquita at the Public Works Service, (EM, 2009)
- 3 ENG. PINTO TEIXEIRA AIRPORT AIR TERMINAL / QUELIMANE AIRPORT (c. 1968 - 1973), Octávio Rego Costa, (EM, 2010)
- 4 ADMINISTRATIVE OFFICES / ZAMBEZIA GOVERNMENT (c. 1959 - 1963), João Garizo do Carmo, (EM, 2009)
- 5 EPISCOPAL PALACE (1955 - b. 1961), João Garizo do Carmo, (EM, 2010)
- 6 CINE-THEATER ÁGUIA (1955 - 1958), João Garizo do Carmo, (EM, 2009)
- 7 BANCO NACIONAL ULTRAMARINO BRANCH / MOZAMBIQUE BANK (1960 - 1972), Francisco José de Castro, (EM, 2009)
- 8 MONTEIRO & GIRO CERAMICS FACTORY'S HOUSING CLUSTER (1956 - 1961), Arménio Losa and Cassiano Barbosa, (EM, 2009)

#### CHIMOIO

- 1 BANCO NACIONAL ULTRAMARINO BRANCH (1955 - 1959), Paulo de Melo Sampaio, (EM, 2010)
- 2 D. GONÇALO DA SILVEIRA SCHOOL / AMÍLCAR CABRAL 2ND GRADE ELEMENTARY SCHOOL (1960 - 1964), Public Works Service, (EM, 2010)
- 3 AUTO-INDUSTRIAL (a. 1958), Paulo de Melo Sampaio, (EM, 2010)
- 4 ADMINISTRATIVE OFFICES / MANICA GOVERNMENT (c. 1971), Bernardino Ramalhete, (EM, 2010)
- 5 MONTALTO CINEMA (1957 - 1963), Paulo de Melo Sampaio, (EM, 2010)

6 RAILWAY STATION (1959 - 1966),  
Paulo de Melo Sampaio, (EM, 2010)

7 MONTALTO BUILDING (1957 - 1960),  
Paulo de Melo Sampaio, (EM, 2010)

#### **GONDOLA**

1 RAILWAYMEN SPORTS CLUB SWIMMING POOL  
(1959 - 1964), Eduardo Naia Marques and Julião de  
Azevedo, (EM, 2010)

#### **DONDO**

1 BANCO PINTO & SOTTO MAYOR BRANCH /  
BARCLAYS BANK (a. 1968), Eduardo Naia Marques,  
(EM, 2019)

2 SANTA ANA CHURCH (1956 - 1959),  
Francisco José de Castro, (EM, 2019)

#### **MAXIXE**

1 BANCO NACIONAL ULTRAMARINO BRANCH /  
MOZAMBIQUE BANK (1966 - 1968),  
Carlos da Veiga Camelo, (EM, 2018)

#### **INHAMBANE**

1 CTT SCHOOL / PROVINCIAL DIRECTORATE OF  
TRANSPORT AND COMMUNICATIONS (1972 - 1974)  
Pancho Guedes, (EM, 2018)

2 VASCO DA GAMA INDUSTRIAL AND COMMERCIAL  
SCHOOL / EDUARDO MONDLANE INDUSTRIAL A  
ND COMMERCIAL INSTITUTE (1960 - 1963), Fernando  
Mesquita at the Public Works Service , (EM, 2018)

3 RAILWAY TECHNICAL SCHOOL / HOTEL AND  
TOURISM SCHOOL (1971 - 1972), Pancho Guedes,  
(EM, 2018)

#### **MATOLA**

1 THE HOLY FAMILY OF MACHAVA CHURCH  
(1962 - 1965), Pancho Guedes, (EM, 2019)

2 MACHAVA HOSPITAL - SANATORIUM / MACHAVA  
GENERAL HOSPITAL (c. 1960 - 1966), João José  
Tinoco and Alberto Soeiro, (EM, 2009)

#### **INHACA**

1 INHACA HOTEL (c. 1963), João José Tinoco, (EM, 2019)

#### **MAPUTO**

1 SPENCE & LEMOS BUILDING (c. 1957 - 1963),  
Pancho Guedes, (EM, 2009)

2 CARLOS FERREIRA PÓ PEDIATRICS CLINIC (c. 1961),  
Marcos Miranda Guedes and Octávio Pó, (EM, 2019)

3 ENTREPOSTO GROUP (1969 - a. 1970),  
João José Tinoco and António Matos Veloso,  
(EM, 2009)

4 FEVEIREIRO & ROCHA BUILDING AND AVENIDA  
THEATER (1960 - 1963), João José Tinoco, (EM, 2018)

5 THE LAUGHING LION BUILDING (1956 - 1958),  
Pancho Guedes, (EM, 2009)

6 A REGULADORA DE MOÇAMBIQUE FACTORY  
(c. 1970), João José Tinoco, (EM, 2009)

7 SAIPAL BAKERY (1952 - 1958), Pancho Guedes,  
(EM, 2009)

8 SCHOOL OF HUMAN MEDICINE / COLLEGE OF  
MEDICINE (1963 - 1965, Public Works Service,  
(EM, 2019)

9 HOUSING AND OFFICE BUILDING (c. 1961),  
Luís Vasconcelos, (EM, 2020)

10 DR. FIRMINO SANTANA HOSPITAL / MAVALANE  
GENERAL HOSPITAL (1961 - 1966),  
João José Tinoco and Alberto Soeiro, (EM, 2012)

11 GOVERNOR JOAQUIM DE ARAÚJO TECHNICAL  
ELEMENTARY SCHOOL / ESTRELA VERMELHA  
SECONDARY SCHOOL (1960 - 1963),  
Fernando Mesquita at the Public Works Service,  
(EM, 2009)

12 DR. AZEVEDO E SILVA COMMERCIAL SCHOOL /  
MAPUTO COMMERCIAL INSTITUTE (1969 - 1963),  
Cardoso Alves at the Public Works Service, (EM, 2010)

13 D. ANA DA COSTA PORTUGAL HIGH SCHOOL /  
POLANA SECONDARY SCHOOL (1970 - 1975),  
João José Tinoco and José Forjaz, (EM, 2009)

14 RED TOWERS BUILDING (1970 - a. 2000),  
Carlos Veiga Camelo, (EM, 2012)

15 ZAMBI RESTAURANT (1955 - 1956),  
Pancho Guedes, (EM, 2009)



- 16 DRAGON HOUSE BUILDING (1951 - c. 1953), Pancho Guedes, (EM, 2020)
- 17 OTTO BARBOSA GARAGE AND SALES HALL ( 1952 - a. 1958), Pancho Guedes, (EM, 2019)
- 18 ABREU, SANTOS & ROCHA BUILDING (c. 1953 - 1962), Pancho Guedes, (EM, 2009)
- 19 EXTENSION OF THE MAVALANE AIR TERMINAL FOR DETA / LAM HEADQUARTERS (1966 - 1971), João José Pinho da Cruz, (EM, 2018)
- 20 PIRAMIDAL NURSERY SCHOOL (1957 - 1961), Pancho Guedes, (EM, 2009)
- 21 MIGUEL BOMBARDA HOSPITAL / MAPUTO CENTRAL HOSPITAL (1958 - 1965), Francisco Assis and Luís Vasconcelos at the Public Works Service, (EM, 2010)
- 22 SCHOOL OF VETERINARY MEDICINE / VETERINARY COLLEGE (1963 - 1964), Luís Vasconcelos at the Public Works Service, (EM, 2012)
- 23 CIVIL AVIATION SERVICES / CIVIL AVIATION INSTITUTE (c. 1958 - 1959), João José Tinoco, Maria Carlota Quintanilha, and Alberto Soeiro, (EM, 2010)
- 24 GAGO COUTINHO AIRPORT AIR TERMINAL / MAPUTO INTERNATIONAL, AIRPORT (1953 -1963), Cândido Palma de Melo at the Directorate General of Civil Aviation, (EM, 2010)
- 25 SANTO ANTÓNIO DA POLANA CHURCH (1959 - 1962), Nuno Craveiro Lopes, (EM, 2009)
- 26 INSTITUTE OF MEDICAL RESEARCH / CENTER FOR AFRICAN STUDIES (a. 1966), João José Tinoco and José Joaquim Dias, (EM, 2018)
- 27 MIGUEL BOMBARDA HOSPITAL FUNERAL SERVICE (1960 - c. 1961), Luís Vasconcelos at the Public Works Service, (EM, 2012)
- 28 PROMETHEUS BUILDING (1951 - c. 1953), Pancho Guedes, (EM, 2009)
- 29 EXTENSION OF THE EXCHANGE, STATISTICS AND HISTORICAL ARCHIVES COUNCIL (c. 1960 - 1963), Marcos Miranda Guedes and Octávio Pó, (EM, 2009)
- 30 PROVINCIAL HEALTH DIRECTORATE / MINISTRY OF HEALTH (c. 1970), Francisco Assis at the Public Works Service, (EM, 2019)
- 31 MUNICIPAL WATER AND ELECTRICITY SERVICES (1961 - 1964), Marcos Miranda Guedes and Octávio Pó, (EM, 2018)
- 32 COMMERCIAL AND INDUSTRIAL CREDIT BANK / MILLENNIUM BIM (1972 - ?), João José Tinoco and António Matos Veloso, (EM, 2012)
- 33 BANCO NACIONAL ULTRAMARINO BRANCH / MOZAMBIQUE BANK (1954 - 1964), José Gomes Bastos, (EM, 2010)
- 34 MONTEPIO DE MOÇAMBIQUE BUILDING OR BUILDING 33 (c. 1967 - a. 1975), Marcos Miranda Guedes, Octávio Pó, and Alberto Soeiro, (EM, 2010)
- 35 MONTEPIO DE MOÇAMBIQUE HEADQUARTERS BUILDING (1955 - 1959), Alberto Soeiro, (EM, 2009)
- 36 SANTA CRUZ HOTEL (1955 - 1958), Francisco Assis, (EM, 2009)
- 37 BARCLAYS BANK D.C.O. / MILLENNIUM BIM (c. 1954), Pancho Guedes, (EM, 2010)
- 38 JOSSUB BUILDING / TAMARIZ HOTEL (1951 - 1960), Pancho Guedes, (EM, 2009)
- 39 KHOVOLAR STUDENTS' RESIDENCE (1966 - 1974), Pancho Guedes, (EM, 2019)
- 40 ISAURO LOPES BUILDING (1956 - 1960), Pancho Guedes, (EM, 2018)

## BEIRA

- 1 COMPANHIA DE MOÇAMBIQUE BUILDING (c. 1953), José Luís Porto, (EM, 2009)
- 2 MATIAS FERREIRA HOUSE (c. 1956), Paulo de Melo Sampaio, (EM, 2010)
- 3 VASCO FREITAS HOUSES (c. 1957), João Garizo do Carmo, (EM, 2010)
- 4 CALOUSTE GULBENKIAN MUNICIPAL LIBRARY / PROVINCIAL PUBLIC LIBRARY (1963 - 1965), João Garizo do Carmo, (EM, 2019)
- 5 ANTÓNIO DUARTE HOUSES (1952 - 1954), João Garizo do Carmo, (EM, 2020)
- 6 CINE-THEATER SÃO JORGE / UNIVERSITY CENTER FOR CULTURE AND ARTS (1952 - 1954), João Garizo do Carmo, (EM, 2020)
- 7 SACADURA CABRAL INTERNATIONAL AIRPORT / BEIRA INTERNATIONAL AIRPORT (1961 - 1968), Cândido Palma de Melo, (EM, 2018)
- 8 GRANDE HOTEL (1946 - 1955), José Luís Porto, (EM, 2009)
- 9 TOURIST PAVILION (1953 - b. 1957), Francisco José de Castro, (EM, 2009)
- 10 COCOROZIS BUILDING (1954 - 1955), Francisco José de Castro, (EM, 2009)
- 11 OLYMPIA CINEMA / WORLD CHURCH OF THE POWER OF GOD (c. 1942), José Luís Porto, (EM, 2009)
- 12 ALLEN, WACK & SHEPHERD BUILDING (c. 1945), Carlos Ivo, (EM, 2019)
- 13 SHELL GAS STATION (1965), Carlos Ivo, (EM, 2009)
- 14 LOPES DUARTE BUILDING (1968 - 1970), Bernardino Ramalhete, (EM, 2020)
- 15 TÂMEGA BUILDING (1958 - a. 1966), Paulo de Melo Sampaio and João José Malato, (EM, 2009)
- 16 EMBAIXADOR HOTEL (1955 - 1958), Francisco José de Castro, (EM, 2009)
- 17 BUCCELLATO & FILHOS BUILDING (b. 1959 - 1960), Carlos Ivo, (EM, 2009)
- 18 NOVOCINE CINEMA (1966 - a. 1967), Julião de Azevedo, (EM, 2019)
- 19 CHARLES TULLY HOUSES (c. 1957), João Garizo do Carmo, (EM, 2020)
- 20 BANCO PINTO & SOTTO MAYOR BUILDING REMODELING (1966), Paulo de Melo Sampaio and Bernardino Ramalhete, (EM, 2009)
- 21 RAILWAYMEN SPORTS CLUB PAVILION (1956 - 1961), Paulo de Melo Sampaio, (EM, 2019)
- 22 BEIRA RAILWAYS CARRIAGE SHED (c. 1965), Paulo de Melo Sampaio, (EM, 2019)
- 23 BLUE BUILDING (1959 - 1961), Francisco José de Castro, (EM, 2019)
- 24 MIRA MAR HOTEL (c. 1961), Paulo de Melo Sampaio, (EM, 2010)
- 25 MUSLIM ASSOCIATION BUILDING (c. 1971), Bernardino Ramalhete, (EM, 2019)
- 26 VUMBA BUILDING (b.1960 - 1962), João José Malato, (EM, 2020)
- 27 SCHOOL OF THE REVEREND MARIST BROTHERS / CATHOLIC UNIVERSITY OF MOZAMBIQUE (1957 - 1959), Francisco José de Castro, (EM, 2009)
- 28 COMPANHIA DE SEGUROS NAUTICUS BUILDING (1955 - 1957), João Garizo do Carmo, (EM, 2009)
- 29 SCHOOL OF THE CHINESE ASSOCIATION / AGOSTINHO NETO COMPLETE ELEMENTARY SCHOOL (c. 1946), Carlos Ivo, (EM, 2009),
- 30 LUÍS DE CAMÕES SCHOOL / PONTA GÊA COMPLETE ELEMENTARY SCHOOL (1953 - 1956), Pancho Guedes, (EM, 2009)
- 31 ELEMENTARY SCHOOL WITH 8 CLASSROOMS / PIONEIROS COMPLETE ELEMENTARY SCHOOL (c. 1968), Public Works Service, (EM, 2019)
- 32 MEGAZA BUILDING (1955 - 1959), Francisco José de Castro, (EM, 2009)

- 33 HOUSES FOR THE EMPLOYEES OF THE BEIRA MUNICIPALITY (1959 - 1960), Bernardino Ramalhete, (EM, 2019)
- 34 JOÃO CABRAL HOUSING BUILDING (1956 - c. 1958), Francisco José de Castro, (EM, 2019)
- 35 ENTRANCE OF COMANDANTE SOARES PERDIGÃO MUNICIPAL PARK (1958 - 1960), Bernardino Ramalhete, (EM, 2019)
- 36 MANGA NEIGHBORHOOD PREPARATORY SCHOOL (c. 1972), Public Works Service, (EM, 2019)
- 37 PREDIAL ULTRAMARINA BUILDING (c. 1952), João Garizo do Carmo, (EM, 2019)
- 38 ESTORIL MOTEL (1957 - 1960), Paulo de Melo Sampaio, (EM, 2020)
- 39 BEIRA CLUB / WEDDING PALACE (1957 - 1958), Paulo de Melo Sampaio, (EM, 2020)
- 40 THE LIONS CLUB OF BEIRA'S MINI GOLF COURSE AND RESTAURANT (c. 1973), Eduardo da Naia Marques, (EM, 2009)
- 41 MANGA ELEMENTARY SCHOOL (1952 - 1957), João Aires, (EM, 2019)
- 42 VITÓRIA CINEMA (p. 1970), Architecture, Urbanism, and Interior Design Office (GAUD), (EM, 2019)
- 43 TRADE UNION AGENCIES OR TRADE UNION BUILDING (1963 - 1966), Julião de Azevedo, (EM, 2019)
- 44 JOAQUIM ALVES, LDA. COMMERCIAL AND RESIDENTIAL BUILDING (1957), Francisco José de Castro, (EM, 2009)
- 45 LIMA MAYER BUILDING (c. 1961), Julião de Azevedo and João José Malato, (EM, 2019)
- 46 ARNALDO ASCENSÃO SANTOS BUILDING (c. 1956 - 1958), Carlos Ivo, (EM, 2019)
- 47 PAVILION FOR PERMANENT EXHIBITIONS OF NATIONAL ECONOMIC ACTIVITIES / CASA DOS BICOS (1964 - 1967), João Garizo do Carmo, (EM, 2009)
- 48 BEIRA CENTRAL STATION (1957 - 1966), João Garizo do Carmo, Francisco José de Castro, and Paulo de Melo Sampaio, (EM, 2009)
- 49 LUÍS DE CAMÕES SCHOOL / PEDAGOGICAL UNIVERSITY (1959 - 1967), Paulo de Melo Sampaio, (EM, 2009)
- 50 ANTÓNIO VALDOEIROS HOUSE (c. 1972), Bernardino Ramalhete, (EM, 2020)
- 51 THE SACRED HEART OF JESUS CHURCH OR MACÚTI CHURCH (1961 - 1964), Bernardino Ramalhete, (EM, 2009)
- 52 AUDITORIUM-ART GALLERY / SOFALA PROVINCIAL HOUSE OF CULTURE (1961 - 1966), Paulo de Melo Sampaio, Bernardino Ramalhete, and José Augusto Moreira, (EM, 2010)
- 53 EPISCOPAL PALACE (c. 1953), Francisco José de Castro, (EM, 2019)
- 54 BEIRA COMMERCIAL ASSOCIATION (1955 - 1961), Paulo de Melo Sampaio, (EM, 2009)
- 55 RESIDENTIAL BUILDING (c. 1972), Carlos Ivo, (EM, 2009)
- 56 THE IMMACULATE HEART OF MARY CHURCH OR MANGA CHURCH (1954 - 1957), João Garizo do Carmo, (EM, 2009)
- 57 LÍVIO DE ALMEIDA HOUSES (1953 - c. 1957), Paulo de Melo Sampaio, (EM, 2010)
- 58 RENOVATION OF BEIRA TOWN HALL / BEIRA MUNICIPAL COUNCIL (1943 - 1945), José Luís Porto, (EM, 2009)
- 59 MOZAMBIQUE AUTOMOBILE & TOURING CLUB BUILDING (c. 1971), Mário Acácio Couto Jorge, (EM, 2019)
- 60 NACIONAL CINE-THEATER (1953 - 1956), Leonardo Castro Freire, (EM, 2009)
- 61 RAILWAYMEN SPORTS CLUB SWIMMING POOL (1969 - 1973), José Augusto Moreira, (EM, 2019)

# THE ARCHITECTS OF THE STATION

## JOÃO GARIZO DO CARMO

- 1 JOÃO GARIZO DO CARMO, (no date), (Ana Magalhães, "Migrações do moderno: arquitetura na diáspora: Angola e Moçambique (1948-1975)", p. 257)
- 2 THE SACRED HEART OF JESUS CHURCH OR MACÚTI CHURCH, Beira (1954 -1957), João Garizo do Carmo, (EM, 2009)
- 3 COMPANHIA DE SEGUROS NAUTICUS BUILDING, Beira (1955 - 1957), João Garizo do Carmo, (EM, 2009)
- 4 EPISCOPAL PALACE, Pemba (1959 - b. 1962), João Garizo do Carmo, (EM, 2010)
- 5 ADMINISTRATIVE OFFICES / ZAMBEZIA GOVERNMENT, Quelimane (c. 1959 - 1963), João Garizo do Carmo, (EM, 2009)
- 6 PREDIAL ULTRAMARINA BUILDING, Beira (c. 1952), João Garizo do Carmo, (EM, 2019)
- 7 CALOUSTE GULBENKIAN MUNICIPAL LIBRARY / PROVINCIAL PUBLIC LIBRARY, Beira (1963 - 1965), João Garizo do Carmo, (EM, 2019)
- 8 CHARLES TULLY HOUSES, Beira (c. 1957), João Garizo do Carmo, (EM, 2020)
- 9 ÁGUA CINE-THEATER, Quelimane (1955 - 1958), João Garizo do Carmo, (EM, 2009)
- 10 ANTÓNIO DUARTE HOUSES, Beira (1952 - 1954), João Garizo do Carmo, (EM, 2020)
- 11 GARIZO DO CARMO HOUSES, Beira (c. 1958), João Garizo do Carmo, (EM, 2020)
- 12 SÃO JORGE CINE-THEATER / UNIVERSITY CENTER FOR CULTURE AND ARTS, Beira (1952 - 1954), João Garizo do Carmo, (EM, 2020)
- 13 PAVILION FOR PERMANENT EXHIBITIONS OF NATIONAL ECONOMIC ACTIVITIES / CASA DOS BICOS, Beira (1964 - 1966), João Garizo do Carmo, (EM, 2020)

## FRANCISCO JOSÉ DE CASTRO

- 1 FRANCISCO JOSÉ DE CASTRO, (no date), (Ana Magalhães, "Migrações do moderno: arquitetura na diáspora: Angola e Moçambique (1948-1975)", p. 275)
- 2 EMBAIXADOR HOTEL, Beira (1955 - 1958), Francisco José de Castro, (EM, 2009)
- 3 DIÁRIO DE MOÇAMBIQUE BUILDING, Beira (1954 - c. 1958), Francisco José de Castro, (EM, 2020)
- 4 COCOROZIS BUILDING, Beira (1954 - 1955), Francisco José de Castro, (EM, 2009)
- 5 MEGAZA BUILDING, Beira (1955 - 1959), Francisco José de Castro, (EM, 2009)
- 6 JOÃO CABRAL RESIDENTIAL BUILDING, Beira (1956 - c. 1958), Francisco José de Castro, (EM, 2019)
- 7 JOAQUIM ALVES, LDA. COMMERCIAL AND RESIDENTIAL BUILDING, Beira (1957), Francisco José de Castro, (EM, 2020)
- 8 BLUE BUILDING, Beira (1959 - 1961), Francisco José de Castro, (EM, 2019)
- 9 SCHOOL OF THE REVEREND MARIST BROTHERS / CATHOLIC UNIVERSITY OF MOZAMBIQUE, Beira (1957 - 1959), Francisco José de Castro, (EM, 2009)
- 10 TOURIST PAVILION, Beira (1953 - b. 1957), Francisco José de Castro, (EM, 2009)
- 11 EPISCOPAL PALACE, Beira (c. 1953), Francisco José de Castro, (EM, 2019),
- 12 MUNDIAL BUILDING, Beira (1959 - 1962), Francisco José de Castro, (EM, 2009)
- 13 BANCO NACIONAL ULTRAMARINO BRANCH / MOZAMBIQUE BANK, Quelimane (1960 - 1972), Francisco José de Castro, (EM, 2009)

## PAULO DE MELO SAMPAIO

- 1 PAULO DE MELO SAMPAIO, (no date), (Ana Magalhães, "Migrações do moderno: arquitetura na diáspora: Angola e Moçambique (1948-1975)", p. 261)
- 2 MATIAS FERREIRA HOUSES, Beira (c. 1956), Paulo de Melo Sampaio, (EM, 2010)
- 3 LÍVIO DE ALMEIDA HOUSES, Beira (1953 - c. 1957), Paulo de Melo Sampaio, (EM, 2009)
- 4 MARCELINO ALVES RIBEIRO HOUSE, Beira (1957 - 1958), Paulo de Melo Sampaio and Marcelo Moreno Ferreira, (EM, 2010)
- 5 TRANQUILIDADE DE MOÇAMBIQUE BUILDING, Beira (1962 - c. 1965), Paulo de Melo Sampaio, (EM, 2019)
- 6 TÂMEGA BUILDING, Beira (1958 - a. 1966), Paulo de Melo Sampaio and João José Malato, (EM, 2019)
- 7 BANCO NACIONAL ULTRAMARINO BRANCH, Chimoio (1955 - 1959), Paulo de Melo Sampaio, (EM, 2010)
- 8 ESTORIL MOTEL, Beira (1957 - 1960), Paulo de Melo Sampaio, (EM, 2020)
- 9 LUÍS DE CAMÕES SCHOOL / PEDAGOGICAL UNIVERSITY, Beira (1959 - 1967), Paulo de Melo Sampaio, (EM, 2009)
- 10 EMPORIUM BUILDING, Beira (c. 1960 - 1962), Paulo de Melo Sampaio, (EM, 2019)
- 11 BEIRA CLUB / WEDDING PALACE, Beira (1957 - 1958), Paulo de Melo Sampaio, (EM, 2020)
- 12 RAILWAYMEN SPORTS CLUB PAVILION, Beira (1956 - 1961), Paulo de Melo Sampaio, (EM, 2019)
- 13 MONTALTO BUILDING, Chimoio (1957 - 1960), Paulo de Melo Sampaio, (EM, 2010)

# BEIRA CENTRAL STATION

## URBANIZATION PLANS

- 1 HYDROGRAPHIC RECONNAISSANCE OF THE MOUTH OF THE PUNGUE AND BUZIO WITH PART OF THIS RIVER'S COURSE, (1891), (delagoabayworld.files.wordpress.com)
- 2 PLAN OF THE CITY OF BEIRA, (1899), (Luís Silveira - "Ensaio de Iconografia das cidades portuguesas do Ultramar", c. 1956, p. 264)
- 3 THE HARBOUR LOOKING NORTH BEIRA, (c. 1906), J. Wexelsen, (Azevedo, Paulo, Pioneer Photographers of Mozambique , 2020: 140)
- 4 PLAN OF THE CITY OF BEIRA, (1934), (Beira Central Station Archive)
- 5 PRELIMINARY PROJECT OF THE URBANIZATION OF THE CITY OF BEIRA, (1943), José Luís Porto and Joaquim Ribeiro Alegre, ("Ribeiro Alegre e José Luís Porto - "Resposta ao Parecer do Gabinete de Urbanização Colonial acerca do Ante-Projecto de Urbanização da Cidade da Beira", 1946, pp. 32-33)
- 6 PRELIMINARY PROJECT OF THE URBANIZATION OF THE CITY OF BEIRA, (1943), José Luís Porto and Joaquim Ribeiro Alegre, ("Ribeiro Alegre e José Luís Porto - "Resposta ao Parecer do Gabinete de Urbanização Colonial acerca do Ante-Projecto de Urbanização da Cidade da Beira", 1946, pp. 70-71)
- 7 PRELIMINARY PROJECT OF THE URBANIZATION OF THE CITY OF BEIRA, (1943), José Luís Porto and Joaquim Ribeiro Alegre, ("Ribeiro Alegre e José Luís Porto - "Resposta ao Parecer do Gabinete de Urbanização Colonial acerca do Ante-Projecto de Urbanização da Cidade da Beira", 1946, pp. 8-9)
- 8 PRELIMINARY PROJECT OF THE URBANIZATION OF THE CITY OF BEIRA, (1943), José Luís Porto and Joaquim Ribeiro Alegre, ("Ribeiro Alegre e José Luís Porto - "Resposta ao Parecer do Gabinete de Urbanização Colonial acerca do Ante-Projecto de Urbanização da Cidade da Beira", 1946, pp. 48-49)
- 9 PRELIMINARY PROJECT OF THE URBANIZATION OF THE CITY OF BEIRA, (1943), José Luís Porto and Joaquim Ribeiro Alegre, ("Ribeiro Alegre e José Luís Porto - "Resposta ao Parecer do Gabinete de Urbanização Colonial acerca do Ante-Projecto de Urbanização da Cidade da Beira", 1946, pp. 80-81)

## DESIGN

- 1 BEIRA RAILWAY STATION, (c. 1907), J. Wexelsen, (Paulo Azevedo, "Photographos Pioneiros de Moçambique", 2020, p. 141)
- 2 BEIRA CENTRAL STATION, PRELIMINARY PROJECT, PERSPECTIVE, (1956), Manuel Júlio Barbosa e Silva, (Arquivo Histórico Ultramarino)
- 3 ARCHITECTURE COMPETITION?, AERIAL VIEW, Paulo de Melo Sampaio?, (no date), (Beira Central Station Archive)

## BEIRA RAILWAY STATION PROJECT

- 1 SET PLAN, (April 18, 1959), (Documentation and Information Center of the Portuguese Institute for Development Support)
- 2 1<sup>ST</sup> FLOOR PLAN, (April 18, 1959), (Documentation and Information Center of the Portuguese Institute for Development Support)
- 3 SOUTHEAST ELEVATION, (April 1, 1960), (Documentation and Information Center of the Portuguese Institute for Development Support)
- 4 2<sup>ND</sup> FLOOR PLAN, (April 2, 1960), (Documentation and Information Center of the Portuguese Institute for Development Support)
- 5 SECTION AA, (April 1, 1960 de Abril de 1960), (Documentation and Information Center of the Portuguese Institute for Development Support)
- 6 SOUTHWEST ELEVATION, (April 1, 1960), (Documentation and Information Center of the Portuguese Institute for Development Support)
- 7 NORTHEAST ELEVATION AND SECTION CC, (April 1, 1960), (Documentation and Information Center of the Portuguese Institute for Development Support)

## BEIRA RAILWAY STATION PROJECT

- 1 PLAN OF THE RESTAURANT, (April 1960), (Beira Central Station Archive)

- 2 SECTION II-II, (no date), (Beira Central Station Archive)
- 3 SECTION V-V, (no date), (Beira Central Station Archive)
- 4 SECTION VI-VI, (no date), (Beira Central Station Archive)
- 5 PROFILE N° 4/9, ADMINISTRATION BUILDING, (no date, construction phase), (Beira Central Station Archive)
- 6 REINFORCED CONCRETE, FOUNDATIONS OF THE EXTERIOR ARCHES, (July 1961), (Beira Central Station Archive)
- 7 REINFORCED CONCRETE, BODY P, ARCHES (April 2, 1960), (Beira Central Station Archive)
- 8 REINFORCED CONCRETE, BODY C, (March 25, 1960), (Beira Central Station Archive)

## CONSTRUCTION

- 1 SCALE MODEL OF THE BEIRA CENTRAL RAILWAY STATION AT THE MOZAMBIQUE RAILWAY PAVILION AT THE CENTRAL AFRICA TRADE FAIR, BULAWAYO, ZIMBABWE, (May 1960), ("Boletim dos Portos, Caminhos de Ferro e Transportes de Moçambique", May 1960, pp. 26-27)
- 2 BEIRA CENTRAL STATION UNDER CONSTRUCTION, (1963), ("Boletim dos Portos, Caminhos de Ferro e Transportes de Moçambique", September 1963, p. 21)
- 3 BEIRA CENTRAL STATION UNDER CONSTRUCTION, (1964), (Archive of the Mozambique Railways Museum)
- 4 BEIRA CENTRAL STATION UNDER CONSTRUCTION, (September 1964), ("Noticias", July 15, 1964, p. 5)
- 5 INAUGURATION OF THE BEIRA CENTRAL STATION, (October 1, 1966), ("Boletim dos Portos, Caminhos de Ferro e Transportes de Moçambique", October 1966, p. 19)
- 6 PORT AND RAIL FACILITIES OF BEIRA, (no date), (Archive of the Mozambique Railways Museum)

# BEIRA CENTRAL STATION

## MATERIALS AND CONSTRUCTION SYSTEMS

- 1 ADMINISTRATION BLOCK, DECORATIVE PANEL ON THE SOUTHWESTERN TOP OF THE 2<sup>ND</sup> FLOOR GALLERY, (EM, 2019)
- 2 PUBLIC ATRIUM BODY , VAULTED NAVE, TOBACCONIST'S AND COMMERCIAL PREMISES, (EM, 2009)
- 3 PUBLIC ATRIUM BODY, TICKET OFFICE IN THE PASSAGE ATRIUM, (EM, 2009)
- 4 PUBLIC ATRIUM BODY, TRANSITION BETWEEN THE PUBLIC ATRIUM BODY AND THE PASSAGE ATRIUM, (EM, 2009)
- 5 PUBLIC ATRIUM BODY, TRANSVERSAL PATH BETWEEN THE ADMINISTRATION BODY AND ACCESS TO JOÃO DE RESENDE STREET, (EM, 2009)
- 6 DECORATIVE PANEL ON THE PASSAGE ATRIUM'S SOUTHEASTERN FRONT, PUBLIC ATRIUM BODY, (EM, 2009)
- 7 PUBLIC ATRIUM BODY, FRONT OF ELEVATORS ON THE ADMINISTRATION BODY, (EM, 2019)
- 8 ADMINISTRATION BODY, GALLERY, (EM, 2019)
- 9 ADMINISTRATION BODY, ELEVATORS ATRIUM, 7<sup>TH</sup> FLOOR (EM, 2009)
- 10 ADMINISTRATION BODY, 7TH FLOOR, GALLERY, (EM, 2009)
- 11 ADMINISTRATION BODY, MAIN STAIRCASE, (EM, 2019)
- 12 ADMINISTRATION BODY, MAIN STAIRCASE, (EM, 2009)
- 13 ADMINISTRATION BODY, MAIN STAIRCASE, (EM, 2009)
- 14 PUBLIC ATRIUM BODY, RESTAURANT, (EM, 2009)
- 15 PUBLIC ATRIUM BODY, BAR, (EM, 2009)
- 16 PUBLIC ATRIUM BODY, RESTAURANT, (EM, 2009)



- 17 PUBLIC ATRIUM BODY, EXTERIOR OF THE RESTAURANT VOLUME, BAR AND 1<sup>ST</sup> CLASS WAITING ROOM, (EM, 2009)
- 18 PUBLIC ATRIUM BODY, ELEVATED RESTAURANT ACCESS GALLERY, BAR AND 1<sup>ST</sup> CLASS WAITING ROOM, (EM, 2009)
- 19 PUBLIC ATRIUM BODY, EXTERIOR OF THE RESTAURANT VOLUME, BAR AND 1<sup>ST</sup> CLASS WAITING ROOM, (EM, 2019)
- 20 PLATFORM'S AREA, TRANSITION SPACE BETWEEN THE ADMINISTRATION BODY AND THE PLATFORM'S AREA, (EM, 2019)
- 21 PLATFORM'S AREA, TRANSITION SPACE BETWEEN THE ADMINISTRATION BODY AND THE PLATFORM'S AREA, (EM, 2009)
- 22 PLATFORM'S AREA, PLATAFORMS, PORCHES AND COMMAND BODY, (EM, 2019)
- 23 PLATFORM'S AREA, PLATAFORMS, PORCHES AND COMMAND BODY, (EM, 2019)
- 24 PLATFORM'S AREA, PLATAFORMS, PORCHES AND COMMAND BODY, (EM, 2009)
- 25 PLATFORM'S AREA, PLATAFORMS, PORCHES AND COMMAND BODY, (EM, 2019)
- 8 PUBLIC ATRIUM AND ADMINISTRATION BODIES, SUNSHADING OF THE RESTAURANT'S EXTERIOR FACADE, (EM, 2009)
- 9 ADMINISTRATION BODY, GLASS BLADES OF THE WORKSPACES ON THE 7TH FLOOR GALLERY, (EM, 2020)
- 10 ADMINISTRATION BODY, GLASS BLADES OF THE WORKSPACES ON THE 7TH FLOOR GALLERY, (EM, 2020)
- 11 PLATFORM'S AREA COMMAND BODY, GLASS BLADES AND DOUBLE ROOFING WITH CATALAN VAULTS ON THE FACADE ONTO JOÃO DE RESENDE STREET, (EM, 2019)
- 12 PUBLIC ATRIUM BODY, GRID OF CONCRETE BLOCKS AT THE ACCESS TO JOÃO DE RESENDE STREET, (EM, 2009)
- 13 PUBLIC ATRIUM BODY, GRID OF CONCRETE BLOCKS AT THE ACCESS TO JOÃO DE RESENDE STREET, (EM, 2009)

## CLIMATIC PROTECTION

- 1 PUBLIC ATRIUM BODY, SUNSHADING OF THE EXTERIOR FACADE OF THE RESTAURANT (EM, 2020)
- 2 PARKING LOT, PUBLIC ATRIUM AND ADMINISTRATION BODIES, (EM, 2009)
- 3 ADMINISTRATION BODY, SUNSHADING OF THE MAIN FACADE, (EM, 2009)
- 4 ADMINISTRATION BODY, SUNSHADING OF THE MAIN FACADE, (EM, 2009)
- 5 SEPARATION BETWEEN THE ATRIUM AND ADMINISTRATION BODIES, (EM, 2009)
- 6 ADMINISTRATION BODY, SUNSHADING AND GLASS BLADES ON THE 7TH FLOOR GALLERY, (EM, 2009)
- 7 ADMINISTRATION BODY, FACADE OF THE WORKSPACES IN THE 7<sup>TH</sup> FLOOR GALLERY, (EM, 2009)

## TOTAL WORK OF ART

- 1 TOBACCONIST'S AND TELEPHONES, (no date, construction stage), (Beira Central Station Archive)
- 2 PUBLIC ATRIUM BODY, TOBACCONIST'S AND TELEPHONES, (EM, 2009)
- 3 PUBLIC ATRIUM BODY, TOBACCONIST'S AND TELEPHONES, (EM, 2009)
- 4 PUBLIC ATRIUM BODY, TOBACCONIST'S AND TELEPHONES, (EM, 2009)
- 5 PUBLIC ATRIUM BODY, TOBACCONIST'S AND TELEPHONES, (EM, 2009)
- 6 PUBLIC ATRIUM BODY, TOBACCONIST'S AND TELEPHONES, (EM, 2009)
- 7 PUBLIC ATRIUM BODY, TOBACCONIST'S AND TELEPHONES, (EM, 2009)
- 8 DESK TYPE, 4<sup>TH</sup> FLOOR, (no date, construction stage), (Beira Central Station Archive)
- 9 SOFA AND COFFEE TABLE, 4TH FLOOR, (no date, construction stage), (Beira Central Station Archive)

- 10 FIXED CABINET AND TABLES, FOURTH FLOOR, (no date, construction stage) (Beira Central Station Archive)
- 11 FIXED GARBAGE BIN, (no date, construction stage), (Beira Central Station Archive)
- 12 PLATFORM BENCH, (no date, construction stage), (Beira Central Station Archive)
- 13 DESK, (no date, construction stage), (Beira Central Station Archive)
- 14 ASHTRAY, (no date, construction stage), (Beira Central Station Archive)
- 15 DESK, (no date, construction stage), (Beira Central Station Archive)
- 16 CART FOR ANIMAL STORAGE AND GARBAGE STORAGE, (no date, construction stage), (Beira Central Station Archive)
- 17 DESK TYPE, (no date, construction stage), (Beira Central Station Archive)
- 18 BASE OF THE PUBLIC ATRIUM BODY, PANEL "TRIAGEM" ("TRIAGE") BY JORGE GARIZO DO CARMO, (EM, 2019)
- 19 BASE OF THE PUBLIC ATRIUM BODY, PANEL "TRIAGEM" ("TRIAGE") BY JORGE GARIZO DO CARMO, (EM, 2019)
- 20 BASE OF THE PUBLIC ATRIUM BODY, PANEL "TRIAGEM" ("TRIAGE") BY JORGE GARIZO DO CARMO, (EM, 2019)
- 21 ADMINISTRATION BODY, ASHTRAY, (EM, 2009)
- 22 PORTICO OF ACCESS TO PORT FACILITIES, PANEL BY J. PENEDA, (EM, 2018)
- 23 PASSAGE ATRIUM, PANEL BY J. PENEDA, (EM, 2009)
- 24 PLATFORM'S AREA, BENCH, (EM, 2009)
- 25 PUBLIC AND ATRIUM PASSAGE, PATIO / WATER MIRROR, SCULPTURE "ESPELHO" ("MIRROR") BY MARIA ALICE MEALHA, (EM, 2009)

## THE RAILWAY STATION AND THE CITY

- 1 FISHING PORT, (MMO, 2020)
- 2 BEIRA CENTRAL STATION, (MMO, 2020)
- 3 BEIRA PORT AND BEIRA CENTRAL STATION, (no date), (<https://knowow.net>)
- 4 BEIRA CENTRAL STATION PARKING LOT, (EM, 2020)
- 5 BEIRA CENTRAL STATION PARKING LOT, (MMO, 2019)
- 6 FISHING PORT, (MMO, 2019)
- 7 CASA DO ARTISTA (ARTIST ' S HOUSE), (MMO, 2020)
- 8 COURT, (MMO, 2019)
- 9 CHIVEVE, (EM, 2019)
- 10 RAILWAYMEN SPORTS CLUB SWIMMING POOL, (EM, 2019)
- 11 CHIVEVE CITY PARK , (NO DATE), (<https://www.facebook.com/Infraestruturas-Verdes-Urbanas-Beira>)
- 12 CHIVEVE CITY PARK, (NO DATE), (<https://www.facebook.com/Infraestruturas-Verdes-Urbanas-Beira>)
- 13 CHIVEVE CITY PARK, (NO DATE), (<https://www.facebook.com/Infraestruturas-Verdes-Urbanas-Beira>)
- 14 CHIVEVE CITY PARK, CASA DOS BICOS, (no date), (<https://www.facebook.com/Infraestruturas-Verdes-Urbanas-Beira>)
- 15 TOWNHALL SQUARE, (MMO, 2019)
- 16 TOWNHALL SQUARE, (MMO, 2020)

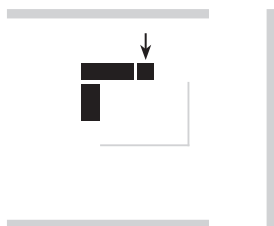
## **SURVEYING AND INSPECTION OF THE BUILDING**

- 1 360º PHOTO, PUBLIC ATRIUM BODY, (SC | JO, 2019)
- 2 END OF WORK SIGN, (APRIL 7, 1966), (EC, 2020)
- 3 "BOLETIM DOS PORTOS, CAMINHOS DE FERRO E TRANSPORTES DE MOÇAMBIQUE", (JUNE 1966)
- 4 "BOLETIM DOS PORTOS, CAMINHOS DE FERRO E TRANSPORTES DE MOÇAMBIQUE", (OCTOBER 1966)
- 5 "BOLETIM DOS PORTOS, CAMINHOS DE FERRO E TRANSPORTES DE MOÇAMBIQUE", (JUNE 1967)
- 6 "BOLETIM DOS PORTOS, CAMINHOS DE FERRO E TRANSPORTES DE MOÇAMBIQUE", (SEPTEMBER 1970)
- 7 ADMINISTRATION BODY, MAIN STAIRCASE, (SC | JO, 2019)
- 8 ROOFING BETWEEN PUBLIC ATRIUM BODY AND ADMINISTRATION BODY, (SC | JO, 2019)
- 9 PLATFORM BODY, (SC | JO, 2019)
- 10 ADMINISTRATION BODY, ROOFING, (SC | JO, 2019)
- 11 PLATFORM BODY, (SC | JO, 2019)
- 12 ADMINISTRATION BODY , GALLERY, (SC | JO, 2019)
- 13 PLATFORM BODY, (SC | JO, 2019)
- 14 ADMINISTRATION BODY, ROOFING, (SC | JO, 2019)
- 15 ADMINISTRATION BODY , GALLERY, (SC | JO, 2019)
- 16 ADMINISTRATION BODY , GALLERY, (SC | JO, 2019)
- 17 ADMINISTRATION BODY, EXTERIOR FRAMES, (SC | JO, 2019)
- 18 ROOFING BETWEEN PUBLIC ATRIUM BODY AND ADMINISTRATION BODY, (SC | JO, 2019)
- 19 ADMINISTRATION BODY , GALLERY, (SC | JO, 2019)
- 20 ADMINISTRATION BODY, CLIMATIC PROTECTION, (SC | JO, 2019)
- 21 PLATFORM BODY, (SC | JO, 2019)
- 22 ADMINISTRATION BODY, MAIN STAIRCASE (EXTERIOR), (SC | JO, 2019)
- 23 PHOTOGRAPHIC SURVEY, DRONE, (NILSON ABIBO, LIFE STUDIOS, 2019)
- 24 PHOTOGRAPHIC SURVEY, DRONE, (NILSON ABIBO, LIFE STUDIOS, 2019)
- 25 PHOTOGRAPHIC SURVEY, DRONE, (NILSON ABIBO, LIFE STUDIOS, 2019)
- 26 PHOTOGRAPHIC SURVEY, DRONE, (NILSON ABIBO, LIFE STUDIOS, 2019)

## AFRICAN CENTER OF MANICA AND SOFALA

The African Center of Manica and Sofala, a cultural and sporting association in the city of Beira, Mozambique, was founded in 1932. In July 1963, the chair of the Board of Directors of the Foundation, Dr. Azeredo Perdigão, during his trip to Mozambique, granted the African Center a subsidy to help with the construction of the permanent facilities. The project, made up of two different buildings - headquarters (1st phase) and gymnasium (2nd phase) - was designed by architect Mário Acácio Couto Jorge, established in Beira since 1959. The laying of the first stone of the 1st phase, carried out by the President of the Republic, Admiral Américo Tomás, took place on July 31, 1964. The construction works were regularly visited by the director of Overseas Services of the Gulbenkian Foundation, Dr. Vítor Sá Machado. The inauguration of the building, in a ceremony presided over by the President of the Metropolitan Government Council, Prof. Marcelo Caetano, took place on August 17, 1969. The Foundation later awarded a subsidy for the acquisition of books for the headquarters library, which the African Center named the "Gulbenkian Room", inaugurated on December 16, 1972 by the Minister of Overseas, Dr. Baltasar Rebelo de Sousa.

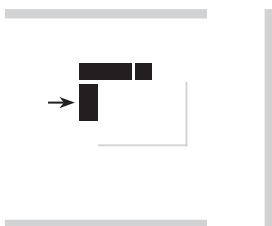
(EM, 2023)



## AUDITORIUM-ART GALLERY

The idea of building an Auditorium in the city of Beira, in Mozambique, was launched by the mayor of the municipality, Commander Soares Perdigão, in 1956. On the other hand, the creation of an Art Gallery in the city was proposed by the poet, writer and journalist Nuno Bermudes, in 1961. In the same year, various cultural associations in the city proposed the construction of an Auditorium-Art Gallery, for which they could count on municipal support and popular subscription. The facilities' program, comprising an auditorium and art gallery (1st phase), headquarters for cultural associations (2nd phase) and museum and art academy (3rd phase), was presented in September 1961. The architecture competition, which took place in 1962, was won by the team of resident architects formed by Paulo de Melo Sampaio, Bernardino Ramalhete and José Augusto Moreira. The initial subsidy, granted in July 1963 by the chair of the Board of Directors of the Calouste Gulbenkian Foundation, Dr. Azeredo Perdigão, allowed the start, in mid-1965, of the 1st phase of construction. The works were regularly visited by the director of Overseas Services of the Gulbenkian Foundation, Dr. Vítor Sá Machado. As part of the City of Beira Festivities of 1967, the symbolic inauguration of the unfinished building took place on August 20, with the opening of an Exhibition of Visual Arts. In 1970, the Gulbenkian Foundation also provided support for the acquisition of the equipment necessary for the auditorium to operate.

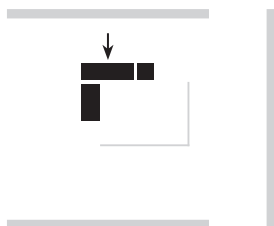
(EM, 2023)



# CALOUSTE GULBENKIAN MUNICIPAL LIBRARY

The Municipal Library Dr. Araújo de Lacerda temporarily occupied a cramped room on the 2nd floor of the Town Hall of the city of Beira, in Mozambique. During his visit to the city in July 1963, the chair of the Board of Directors of the Calouste Gulbenkian Foundation, Dr. Azeredo Perdigão, decided to grant the municipality a subsidy for the construction of a new building for the Library. The Calouste Gulbenkian Municipal Library project, as it came to be called in acknowledgment to the subsidy granted, was designed by the municipal architect, João Garizo do Carmo, from Beira. The project, which laid out the main space of the library on two floors of partial double height, was approved in December 1963. In February 1964, the award of the construction contract was approved and the works were immediately started. The inauguration of the Calouste Gulbenkian Municipal Library by the mayor, Commander Soares Perdigão, took place on January 4, 1965. On December 1 of the same year, they were inaugurated by the acting mayor, Mr. Pedro Gomes dos Santos, the provisional premises of the Municipal Museum of Beira, occupying the gallery on the 1st floor of the Municipal Library. The building was visited by the director of Overseas Services of the Gulbenkian Foundation, Dr. Vítor Sá Machado, in April 1966.

(EM, 2023)





## ART LIBRARY & ARCHIVES

### Director

João Vieira

### Administrative Support

Nuno Parreira

## EXHIBITION

### Curatorship

Elisiário Miranda

### Curatorship Assistant

Jorge Santos

### Research Support (Gulbenkian Archives)

Mafalda Aguiar

Pedro Godinho

### Photo Credits and Content

Alberto Barontini

Bernardo Providência

Edmundo Cândido (EC)

Elisiário Miranda (EM)

Erménio Zandamela

Estefanía Chaves (SC)

Fernando Ferreira Mendes

Luís Lage (LL)

Javier Ortega (JO)

Jorge Santos

Maria Manuel Oliveira (MMO)

Paulo B. Lourenço

### Preservation & Conservation

Sónia Casquição

### Graphic Design

Ana Resende

### Installation

Laurindo Marta (CAM)

Hey Day

### Construction

J.C.Sampaio, Lda.

Co-production



Universidade do Minho



FUNDAÇÃO  
CALOUSTE GULBENKIAN



Laboratório de Paisagens,  
Património e Território



Institute for Sustainability and  
Innovation in Structural Engineering

Partners



CP/Infra  
SOLUÇÕES PORTOS E FERROVIÁRIAS  
PORTOS E CAMINHOS DE FERRO DE MOÇAMBIQUE, S.P.



Support

Getty

## Lighting

Manuel Milreu

## Audiovisual Materials

João Hora

Manuel Rodrigues

## Website Content

Ana Barata

Maria João Santos

## MARKETING AND DIGITAL TRANSFORMATION

### Director

Nuno Prego

### Deputy Director

Susana Prudêncio

Clara Vilar

Pedro Relvas

## COMMUNICATION

### Director

Elisabete Caramelo

### Deputy Director

Luís Proença

Leonor Vaz

## CENTRAL SERVICES DEPARTMENT

### Director

Ana Maduro

### Deputy Director

Paulo Madruga

Jorge Martins Lopes

